



## COST Action CA16109

### Chemical On-Line cOmpoSition and Source Apportionment of fine aerosoL COLOSSAL

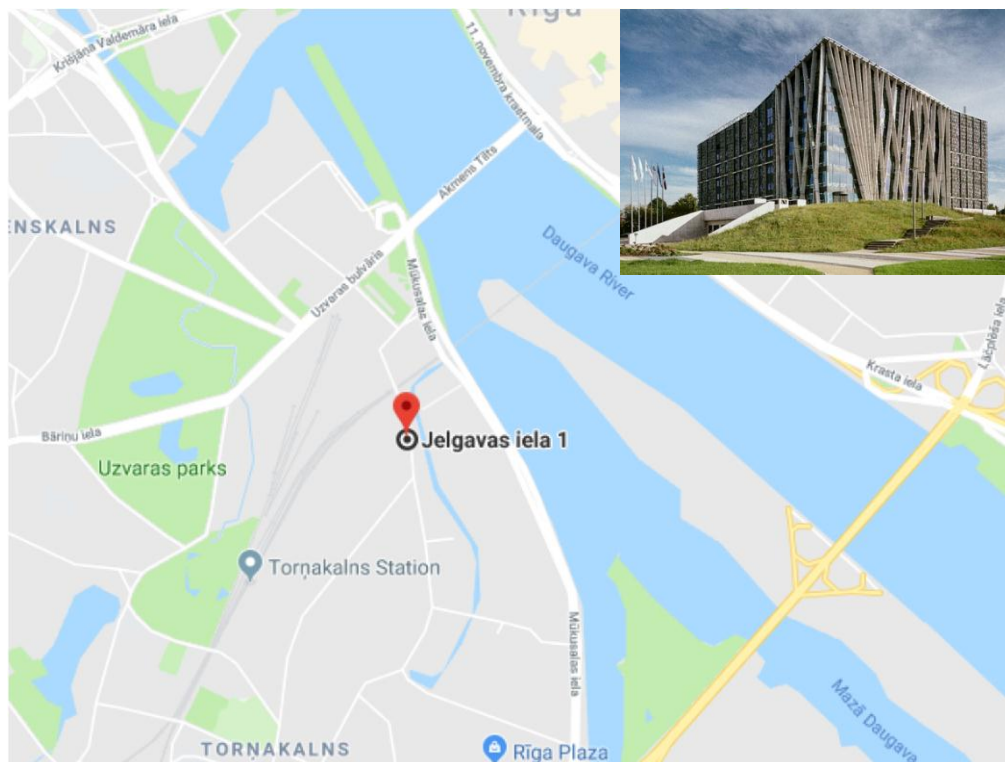
### Working Groups and Management Committee Meeting

14-18 Oct 2019, Riga, Latvia

**MEETING VENUE:**

Academic Centre of University of Latvia  
Jelgavas Street 1 (Jelgavas iela 1 – *in Latvian*), Riga  
LATVIA

<https://www.tornakalns.lu.lv/eng/>



### **GETTING TO RIGA:**

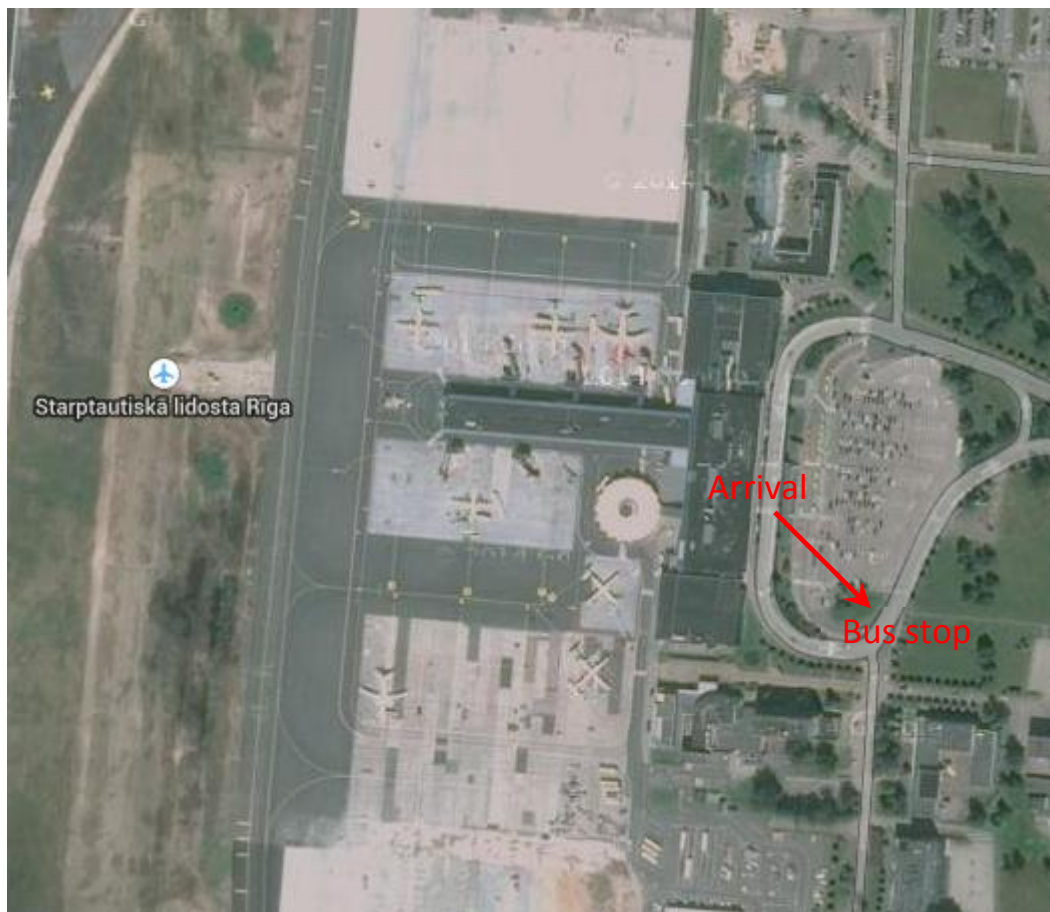
- *By plane:* the main airport is Riga International airport (<http://www.riga-airport.com/en>). Riga airport (RIX) is 13 km from the center of Riga and is well connected by buses and taxis.
- *By train:* the main train station is Riga Railway Central Station, located in city center (more information: <https://www.ldz.lv/en>).
- *By bus:* Riga International bus station is located in city center (more information: <https://www.autoosta.lv/?lang=en>).

### **GETTING TO THE CITY FROM THE AIRPORT:**

*Local transport form/to Airport from/to Riga city center*

#### **1) City Bus N° 22, - offers direct service between the airport and the city centre**

Bus stop at the airport is located opposite the terminal behind the car parking place:



Frequency 10 - 30 minutes, journey time to city centre take about 30 minutes; bus departing schedule (from Airport to City center):

<u>Working days</u>		<u>Saturdays, Sundays</u>	
5	45	5	45
6	05 20 32 45 58	6	05 25 45
7	11 24 35 45 55	7	05 25 45
8	05 15 25 35 45 57	8	05 25 40 55
9	07 17 27 40 55	9	10 25 45
10	10 25 37 52	10	05 25 47
11	04 18 32 46	11	02 22 42
12	00 14 28 42 56	12	02 15 30 45
13	10 24 38 52	13	00 20 35 50
14	06 20 34 48	14	05 20 40 55
15	02 16 30 44 58	15	10 25 40
16	11 22 33 45 56	16	00 20 40
17	07 19 29 40 51	17	00 15 40
18	01 11 23 34 46 56	18	00 20 35
19	10 25 40 55	19	00 20 40
20	05 20 30 45	20	05 35 55
21	00 15 25 40 55	21	15 40 55
22	10 25 40 55	22	10 30 55
23	10 25 40 55	23	15 30 50
0	10		

- A ticket for an unlimited number of trips is valid 24 hours from its first usage costs 5.00 EUR (in that case you should validate ticket at the bus), can be bought at bus stop ticket machine (on the street);
- A regular ticket for one trip can be bought from the bus driver 2.00 EUR, but if you buy it before commencing your trip at the airport services and tourism information bureau "Welcome to Riga", a regular one-way ticket will cost you only (1.15 EUR); there are ticket machines at bus stop as well.

Additional information: [www.rigassatiksme.lv](http://www.rigassatiksme.lv).

Toll-free information: (+371) 8 000 19 19; (+371) 8 000 19 19.

## 2) Taxi

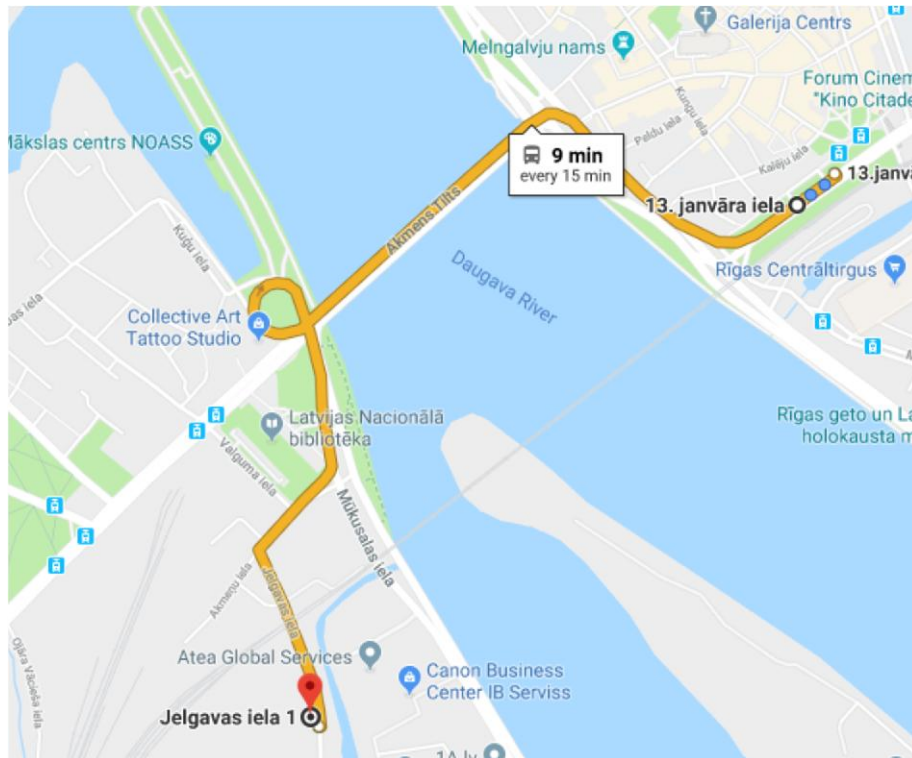
**Riga city and other destinations from the airport can be reached using SIA "Baltic Taxi" and AS "Rīgas Taksometru parks" (Red Cab) cabs.** Journey time to the centre of Riga city is approximately 15 -20 minutes.

Average cost per trip by taxi to Riga city centre: 12-15 EUR. Taxi tariffs are published on the passenger side door of each taxi cab. **Check the journey price before getting in a taxi!**

**General Tourist Info:** <http://www.liveriga.com/en/>

**GETTING TO THE Academic Centre of University of Latvia:**

- The easiest way to reach **Academic Centre of University of Latvia** is by bus No 23, departure stop: *13.janvara iela*, destination stop: *LU Akadēmiskais centrs*. Bus stops close to the entrance door, and departure every 15 minutes.



- If you are coming directly from Airport by bus (No 22), you can get off at stop *Nacionālā Bibliotēka* (National Library), and after walk (about 10 min) to Academic Centre of University of Latvia.

**ADDITIONAL TRANSPORT INFO:**

If you are spending some days and plan to use public transport, you can buy a time ticket, or ticket for certain number of trips. More information: <https://www.rigassatiksmelv/en/>

**ACCOMMODATION:**

Riga has hundreds of hotels. You can just google the most suitable for you, there are some geographically closest to Riga meeting venue:

**Radisson Blu Daugava Hotel (\*\*\*\*), offers free airport shuttle**

24, Kuģu Street, Riga, LV-1007

**Prices:** from 70 €/night/person)

Distance from the venue: 16 min walk, 1300 m.

**Wellton Riverside SPA Hotel (\*\*\*\*)**

11. novembra krastmala 33, Riga, LV-1048

**Prices:** from 76€/night/person

Distance from the venue: 20 min walk, 1500 m (or you can cross bridge by public transport).

**Rixwell Old Riga Palace Hotel (\*\*\*\*)**

Minsterejas iela 8/10, Riga, LV-1050

**Prices:** from 50€/night/person

Distance from the venue: 20 min walk, 1500 m (or you can cross bridge by public transport).

**FINAL RECOMMENDATION:**

Riga is NOT a dangerous city, but pick-pockets are common in the city center. Please take good care of your belongings during your entire stay!!